

## Compression Connectors for Copper Conductor

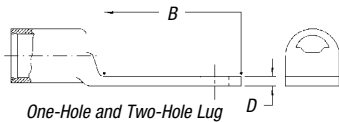
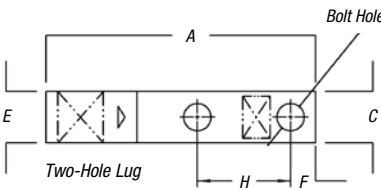
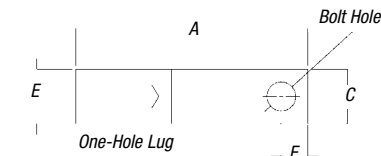
Ideal for confined-space terminations.

### Narrow-Tongue Lugs — One- and Two-Hole, Standard Barrel, 600V Applications



**Material:** High-Conductivity Wrought Copper

**Finish:** Electro Tin Plate



CAT. NO.	CODE	WIRE SIZE	FLEX CLASS G, H, I, K, M <sup>†</sup>	BOLT SIZE	DIMENSIONS (IN.)							DIE CODE	DIE COLOR
					A	B	C	D	E	F	H		
<b>One-Hole Narrow-Tongue Lugs</b>													
54138NT	#4 AWG	91/24		#10	1.31	.56	.37	.10	.37	.25	—	29	GRAY
54107NT	#2-3 AWG	125/24		¼	1.50	.65	.41	.07	.41	.25	—	33	BROWN
54108NT	#1 AWG	150,175/24		¼	1.50	.65	.47	.11	.47	.25	—	37	GREEN
54152NT	1/0 AWG	225/24		¼	1.60	.65	.52	.13	.52	.25	—	42	PINK
54157NT	2/0 AWG	275/24		¼	1.60	.65	.57	.13	.57	.25	—	45	BLACK
54162NT	3/0 AWG	325/24		¼	1.68	.65	.63	.13	.63	.25	—	50	ORANGE
54167NT	4/0 AWG	450/24		¼	1.90	.65	.70	.14	.70	.25	—	54	PURPLE
54172NT	250 kcmil	—		¼	2.00	.65	.77	.14	.77	.25	—	62	YELLOW
54178NT04	300 kcmil	—		¼	2.33	.88	.85	.15	.85	.25	—	66	WHITE
54115NT	350 kcmil	—		½	2.75	1.25	.93	.18	.93	.50	—	71	RED
54115NT06	350 kcmil	—		¾	2.50	1.00	.93	.18	.93	.38	—	71	RED
54118NT	500 kcmil	—		½	3.25	1.25	1.10	.22	1.10	.50	—	87	BROWN
54123NT08	750 kcmil	—		½	3.48	1.25	1.33	.27	1.33	.50	—	106	BLACK
54123NT	750 kcmil	—		¾	3.80	1.58	1.33	.27	1.33	.63	—	106	BLACK
<b>Two-Hole Narrow-Tongue Lugs</b>													
54206NT0310	#4 AWG	91/24		#10	1.88	1.13	.37	.10	.37	.25	.63	29	GRAY
54207NT	#2-3 AWG	125/24		¼	2.04	1.19	.41	.11	.41	.25	.63	33	BROWN
54207NT0412	#2-3 AWG	125/24		¼	2.16	1.31	.41	.11	.41	.25	.75	33	BROWN
54207NT0416	#2-3 AWG	125/24		¼	2.41	1.56	.41	.11	.41	.25	1.00	33	BROWN
54208NT	#1 AWG	150,175/24		¼	2.04	1.19	.47	.11	.47	.25	.63	37	GREEN
54208NT0516	#1 AWG	150,175/24		5/16	2.63	1.78	.47	.11	.47	.38	1.00	37	GREEN
54255NT	1/0 AWG	225/24		5/16	2.61	1.66	.52	.14	.52	.38	.88	42	PINK
54261NT	2/0 AWG	275/24		5/16	2.66	1.66	.57	.14	.57	.38	.88	45	BLACK
54210NT	2/0 AWG	275/24		¾	2.82	1.82	.57	.14	.57	.38	1.00	45	BLACK
54266NT	3/0 AWG	325/24		5/16	2.88	1.78	.63	.13	.63	.38	1.00	50	ORANGE
54211NT	3/0 AWG	325/24		¾	2.92	1.82	.63	.13	.63	.38	1.00	50	ORANGE
54212NT	4/0 AWG	450/24		¾	3.07	1.82	.70	.14	.70	.38	1.00	54	PURPLE
54213NT	250 kcmil	—		¾	3.17	1.82	.77	.14	.77	.38	1.00	62	YELLOW
54275NT	250 kcmil	—		¾	4.16	2.81	.77	.14	.77	.50	1.75	62	YELLOW
54282NT	350 kcmil	—		½	4.36	2.81	.93	.18	.93	.50	1.75	71H	RED
54218NT	500 kcmil	—		¾	4.57	2.57	1.10	.22	1.10	.38	1.75	87	BROWN
54286NT	500 kcmil	—		½	4.81	2.81	1.10	.22	1.10	.50	1.75	87	BROWN
54878BENTPH	600 kcmil	—		½	5.83	3.00	1.20	.24	1.20	.50	1.75	94	GREEN
54223NT0628	750 kcmil	—		¾	4.79	2.57	1.33	.27	1.33	.38	1.75	106H	BLACK
54223NT0616	750 kcmil	—		¾	5.00	2.02	1.66	.27	1.33	.38	1.00	106	BLACK
54223NT	750 kcmil	—		½	5.04	2.81	1.33	.27	1.33	.50	1.75	106H	BLACK
58884BENTPH	—	1600/24		½	6.16	3.00	1.33	.24	1.20	.50	1.75	106H	BLACK
58825NT	900 kcmil	1925/24 = 777 kcmil		¾	5.00	2.13	1.66	.31	1.50	.50	1.00	115	YELLOW
58825NT0828	900 kcmil	1925/24 = 777 kcmil		½	5.75	2.88	1.66	.31	1.50	.50	1.75	115	YELLOW

**CAT. NO.**    **TYPE**

5 4 2 1 2 N T \*

— = To Order 45° and 90° Angle Lugs  
 UF = 45°  
 UB = 90°

Other options include silver plating (add SP to catalog number), blind end (add BE to catalog number) and peep holes (add PH to catalog number).

**Catalog No. Example:**

**54108NTUB** is a 90° angled one-hole narrow-tongue lug for #1 AWG.

\* Special lugs may have other catalog number constructions. Please contact Technical Services.

<sup>†</sup> Contact Technical Services for specific stranding listings

Tooling: pp. F-80-F-100 Die Selector Chart: pp. F-101-F-104